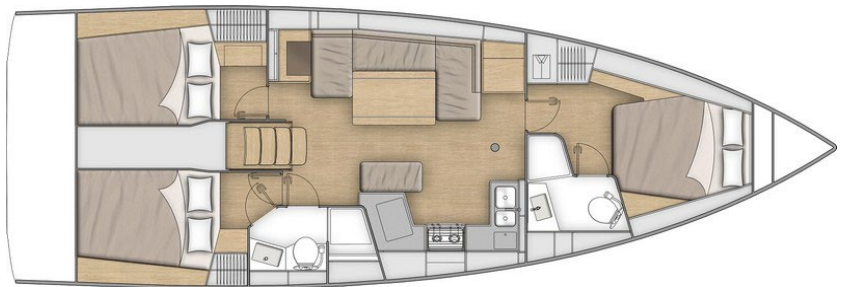


Sunsail 42

Specifications and Equipment List

Sunsail Charter Upgrades in BOLD

| | |
|-------------------|-----------------------|
| Length Overall: | 42ft 3in 12.87m |
| Waterline Length: | 38ft 5in 11.70m |
| Beam: | 13ft 9in 4.18m |
| Draft: | 5ft 6in 1.68m |
| Displacement: | 17,600lbs 7,985 kg |
| Fuel Capacity: | 52 Usgal 195ltr |
| Water Capacity: | 139 USgal 525 ltr |
| Sail Area: | 820 sq ft 76.2 sq m |
| Engine: | Yanmar 45HP |



CONSTRUCTION

- Design in accordance with European Directive requirements and according to CE certification
- Monolithic polyester contact hull
- Monolithic structural inner moulding bonded to the hull (Fabrics -resin)
- Injected deck construction in glass fiber and Saerfoam foam sandwich, covered with non-slip diamond pattern
- **Shallow cast iron keel**
- Twin rudders hung with stainless steel stock
- White coloured hull
- 6 Hull portholes

COCKPIT

- Self-draining cockpit
- 1 Sail locker/Workshop below starboard cockpit bench
- 1 Wet locker below starboard cockpit bench
- 1 x 2-section cockpit bottom locker: 1 hull bottom access and 1 gas bottle
- Teak slats on cockpit benches
- Foldaway helmsman foot chock
- **Plain solid wood decked helmsman seating**
- 2 Steering wheel consoles
- 2 Deck access for emergency tiller, below footrest
- 1 Tiller
- 1 Steering compass on the cockpit table
- Engine control, to starboard
- Enginer control panel, to port
- **Cockpit table, wood with GRP leafs**
- 2 stainless steel handrails, Stowage and location for BIB
- Saloon-type companionway door, Sliding hatch

- **Fully opening Electric transom, convertible to bathing platform (2,65 x 0,80m / 8'8" x 2'7")**
- Intermediate cockpit access step
- Teak decking on swim deck
- 1 Fixed, telescopic stainless steel swimming ladder
- **Hot/cold water cockpit shower**
- **LED courtesy light in cockpit**
- **Bimini and dodger**

DECK EQUIPMENT

- Classical 9/10 anodised aluminium mast, 2 spreaders
- Anodised aluminum boom
- Classic stainless steel single strand standard rigging
- Split backstay
- Rigid boom vang with tackle
- Mainsail stay rope on the roof (with 2 chainplates)
- 1 Self-tacking jib track with traveller
- Complete running rigging: Mainsail halyard, Genoa halyard with cleat on mast, Boom topping lift with cleat on mast, Mainsheet, 1 Se
- **2 Halyard bags**
- 9 Clutches
- 2 flag halyards
- 1 manual self tailing coachroof winch (H40.2 STA)
- **1 electric self tailing coachroof winch (H40.2 STAEH)**
- 1 Aluminum Speed Grip winch handle
- 1 Winch handle box
- **Custom heavy duty battened charter mainsail**
- **Charter upgrade, heavy duty furling genoa with red UV protection strips**
- **Stackpack LazyJack system in Sunsail blue with logo**
- **Proful genoa furler**
- Self-draining chain locker - Integrated clench on the deck - Hatch cover
- Single roller stainless steel bow fitting with offset roller
- **Additional anchor arm**
- 6 Aluminum mooring cleats (Length: 300mm / 12")
- Stainless steel chafing plate
- 2 stainless steel pulpit(s)
- 2 Stainless steel pushpits
- 2 Stainless steel handrails on coachroof
- 1 Lifebuoy support bracket
- Tube welded onto pulpit for flag
- Double guard lines and stainless steel stanchions (605mm / 2')
- **Lifeline gates**
- Emergency ladder on pushpit
- **Electric windlass (1000 W) - Hard wired remote control**
- **Aft transom protection**
- **Bow protection**
- **Outboard engine bracket**

SALOON / INTERIOR

- **Light oak woodwork with charcoal material panelling**
- Laminated floorboards

- Wooden saloon companionway with hanging steps made from laminated moulded wood with non-slip coating
- 2 Stainless steel companionway handrails
- Headroom: 2,00m / 6'7"
- U shaped saloon bench - double density foam
- **Saloon table converts to double berth**
- Storage under bench seats
- 1 dual USB port
- 1 Hull porthole
- 2 Coaming windows with pleated blinds
- 2 Opening deck hatches with mosquito screen/blinds
- **LED indirect lighting**
- **Anti-skid on companionway steps**

GALLEY

- Headroom: 1,91m / 6'3"
- C-shaped galley
- Compact sink cover with cutting board
- Stainless steel sink 2 rectangular basins - 1 Mixer tap with hot/cold water under pressure
- **Stainless steel cooker 3 burner oven/grill on gimbal**
- 190L / 50 US Gal icebox, front opening (with 10 L/3 US Gal freezer)
- Fitted lockers and closed shelving
- Open shelving above stove and sink
- Low-level stowage below sink
- Lower unit: 1 door, 2 drawers
- Bin with access on the work top
- 2 x 230V Sockets (in trim level)
- 2 Coaming windows with pleated blinds
- 1 Hull porthole
- 1 Flush deck hatch with blind/mosquito net
- **Microwave**
- Propane solenoid system

CHART TABLE

- Headroom: 1,97m / 6'6"
- Table with drop fronts - Wooden fiddle
- Switch panel on bulkhead for access to electrical functions
- Stowage against the bulkhead below the chart table
- 1 x 230 V socket
- 1 x Single USB socket
- 1 x spotlight
- 1 x Opening porthole in coaming
- 1 x Fixed coaming window with pleated blind

FORWARD OWNER'S CABIN

- Headroom: 1,94m / 6'4"
- 1 Central double bed (2,03 x 1,60 - 1,31m / 6'8" x 5'3" - 4'4")
- 1 Hanger closet, open storage compartment along the hull
- 1 bedside table on each side of the bed
- 2 Spotlights on the headboard

- 1 dual USB port
- 1 230 V socket
- 3 Flush deck panel with blind/mosquito net
- 2 Portholes with rigid sliding blind

FORWARD OWNER'S HEAD

- Private entrance through forward cabin
- Shower with perspex door - self-draining storage tray - 1 mixer tap
- **Electric Quiet Flush toilet**
- 1 50 L / 131 US Gal rigid holding tank
- 1 Polyester basin - 1 Hot/cold water mixer tap
- 1 Cabinet + Storage space under the basin
- 1 Mirror
- Toilet accessories
- 1 Deck hatch with blind/mosquito net

AFT CABINS

- Headroom: 1,93m / 6'4"
- 1 Double bed (2,04 x 1,37 x 1,21m / 6'8" x 4'6" x 4')
- 1 Hanging locker
- 1 Bed access sideboard
- 1 Spotlight on the headboard
- 1 dual USB port
- 1 230 V socket
- 1 Hull porthole with curtain
- 1 Opening porthole below cockpit seat with curtain
- **Additional opening to the cockpit for improved ventilation**

AFT HEAD

- Headroom: 1,95m / 6'5"
- Access from the saloon or the starboard aft cabin
- Shower with perspex door - self-draining storage tray - 1 mixer tap - white polyester shower base
- **Electric Quiet Flush toilet**
- 1 80 L / 21 US Gal rigid holding tank
- 1 Polyester basin - 1 Hot/cold water mixer tap
- 1 Cabinet + Storage space under the basin
- 2 Mirrors
- Toilet accessories
- 1 Opening porthole in coaming

ELECTRICAL INSTALLATION

- **Full 230 V system (6 inside sockets, 1 Shore power socket)**
- 12V circuit
- **AGM batteries**
- 1 Power distributor
- 60 Amp battery charger
- **Battery charge display (navicolor screen)**
- 12 V electrical panel on the chart table with single USB socket
- Lighting: Overhead lights - Spotlights - LED strip

- Navigation lights (LED): 2 Navigation lights - 1 Anchor light on masthead - 1 Aft starboard stern light
- Wire runs for option cables
- **Hifi Fusion + Interior loudspeakers & Waterproof exterior speakers**
- **1 Triton two graphic display**
- **1 Multifunction touchscreen 9" wide**
- **GPS, Chart plotter, Card reader - Navionics silver cartography**
- **Sensor (log, temperature)**
- **Autopilot**
- **VHF, AIS receiver function**
- **Wind Sensor (Windvane, Anemometer)**
- **1 USB port dual port in the saloon and in each cabin**
- **Fans in saloon and cabins**
- **Air conditioning**
- **TV**
- **Underwater light**
- **2 x Solar panel (For trickle charge of domestic battery bank)**

ENGINE & CONTROLS

- Yanmar engine (4JH45) Common rail shaft line (45HP) diesel
- Engine control at the starboard helm station - Engine control panel, to port
- Engine compartment: Soundproofing foam - Ventilation: 3 air intakes and 1 forced air outlets
- 1 Alternator 12 V / 125 Ah
- 1 Rotomoulded diesel tank 195 L / 52 US Gal (under port aft berth)
- Electronic gauge - Low level alarm - 1 Deck filler
- Filters: Seawater - Diesel - Water separator
- Fixed three blades propeller
- 1 Engine access through companionway (opening with 2 gas struts)
- 2 Engine access through aft cabins

PLUMBING INSTALLATION

- 1 rotomoulded freshwater tank (195L / 52 US Gal) under starboard aft berth - 1 Deck filler
- **Additional freshwater tank (330L / 87 US Gal)**
- Pressurised electric water pump - Expansion tank - Inline filter
- 40 L / 11 US Gal Electric water heater (engine use)
- 1 Rigid black water holding tank for each WC
- Electrical shower drain pumps
- 1 Electric bilge pump
- 1 Manual bilge pump

SAFETY GEAR

- **Mooring kit: fenders and docklines**
- **Primary and secondary anchors**
- **Life jackets and safety harnesses per max pax**
- **Life raft**
- **Flare kit**
- **Binoculars**
- **Navigation tools: Parallel rule, compass, dividers**

GENERAL EQUIPMENT

- Owner's Operating Manual
- Fire extinguishers
- NMMA Certification
- CE Certification
- **Commissioning and delivery to charter base**

CRUISING GEAR

- **Plates, cups, saucers, glasses per max pax**
- **Pots, pans, miscellaneous food prep tools**
- **Cooking and serving utensils**
- **Coffee pot, tea kettle, toaster**

NOTE

The Builder reserves the right to change or amend the contents of this document at any time without prior notification to any third party, and no liability will be accepted for errors contained within the same.

INITIALS: _____

INITIALS: _____

REV 3: 9-16-2021