

# Sunsail 41.0

## Specifications and Equipment List - Sunsail Upgrades In Bold

### DECK & HULL

---

- Single skin hull, hand-laid fibreglass, ISO gelcoat surface, protective barrier coat
- Infused fiberglass inner liner, easy access to grounding frame, relamination in stays attachment areas
- Prisma Process®, ISO gelcoat surface, discontinuous balsa block coring
- Full-length chine for improved stability and speed
- Long waterline for better speed while sailing and under power
- L-shaped cast iron keel less exposed to seaweed and lines
- Twin rudders with self-aligning roller bearings and textile lines, to increase control and pleasure in navigation
- Open bow pulpit (stainless steel)
- Stern pushpits in stainless steel with buoy bracket and emergency ladder
- Lifelines: double level of stainless steel lifelines
- **Lifeline gates**
- 6 x Aluminium mooring cleats
- Deck cleats at midships
- 2 x Stainless steel handrails on coachroof
- Deep anchor locker
- 8 x Large, fixed hull ports
- 2 x Opening ports in the roof
- 7 x Opening deck hatches
- Long tinted acrylic roof windows
- 2 x Coachroof windows in the aft cabins
- Opening ports towards cockpit in the aft cabins (1 per cabin)
- Opening ports towards side-deck in the aft cabins (1 per cabin)
- Hinged companionway doors in plexiglass
- Sliding horizontal hatch in plexiglass
- GRP cockpit table with foldable sides
- Teak inlay on bench seat and transom platform
- Universal gas box, cut-off valve under the stove
- Emergency tiller with fitting in cockpit floor
- Engine control: throttle lever at starboard helmstation and oriented engine panel on the cockpit table
- Large aft fold-down swim platform with ladder
- **Shoal keel**
- **GRP bowsprit with integrated stainless steel anchor roller**
- **1000w Windlass with chain counter and hard-wired remote**
- **Deluxe cockpit table with foldable GRP leaves**
- **12V refrigerator unit in cockpit table**
- **Sunsail striping and graphics**
- **Transom protection**
- **Outboard engine bracket**
- **Bimini and dodger**

### SALOON/INTERIOR

---

- Fine Teak® interior woodwork laminated with solid wood trim, UV stabilized varnish
- Fully-upholstered hull sides and ceiling
- Light oak composite floorboards
- Comfortable seating arrangement to starboard with view of sea through hull ports
- Hinged storage compartments under settee seating
- Large storage behind backrests
- Large table with 2 removable aluminium legs
- Comfortable sofa lounge
- Sliding seat
- Bar furniture with drawer
- Cushions in high-density foam in the saloon
- **Wine storage locker under floorboards**
- **Upholstered bulkheads**
- **Shades for windows and ports in the saloon**
- **Dalsouple on companionway steps**
- **Hasp on companionway hatch**

### NAVIGATION CONSOLE

---

- Chart table with lazarette work top with opening compartment, space designed for laptop computer

- Book shelf
- Large storage space under electrical panel for books and other navigation equipment
- Storage under seat
- Access to central cabinet storage compartment
- Bicolour reading light
- Ergonomic chart table seat
- Multiple storage for telephone, keys, etc.

## GALLEY

---

- U-shape galley located on port side
- Laminate white counter top, with fiddles
- Double stainless steel sinks with chrome fixtures. Sink cover and anti projection board, in Laminate white
- Large drawer in the centre cabinet
- Soft-close, fully-extending drawers
- Waste bin 26 L / 7 US gal
- Open storage behind the galley
- **2 burner stove and grill**
- **Fridge 190 L / 50 US gal with front opening**
- **Mesh on the drain hole in fridge**
- Opening hatch above the stove
- **Propane solenoid cut-off valve**

## FORWARD CABIN

---

- Large domestic size, rectangular berth, 2,00 m x 1,50 m / 6'6" x 4'9", with High Density Premium mattress
- Large hanging locker to starboard with LED lighting
- 2 large drawers underneath the berth
- Side bed tables with leatherette
- Fully upholstered front bulkhead
- 2 large storage areas in front of the cabin
- Opening deck hatch, for light and ventilation
- 2 large fixed hull ports with sliding blinds
- Deck hatches with blind and bug screens

## FORWARD HEAD

---

- En suite compartment with direct access from the cabin
- GRP sink furniture
- Storage with towel shelf
- Large deck hatch
- Indirect LED lighting
- Shower, shower drain with automatic switch, water inlet valve and connector underneath the sink
- Shower separated with a plexiglas door
- **Large bowl Quiet Flush electric head (toilet)**

## AFT CABINS

---

- Large domestic size, berth 2,015 m x 1,38 x 1,22 m / 6'6" x 4'6" x 4', with High Density Premium mattress
- Hanging locker storage shelf along hull
- 1 long fixed hull port, 1 large fixed cockpit window
- 1 opening port towards the cockpit, 1 opening port towards the side decks
- Blinds for each opening
- Access to tanks and technical area between the cabins

## AFT HEAD

---

- Double access, from starboard cabin and saloon
- GRP sink furniture, storage with towel shelf, base cabinet, wall cabinet with 2 mirrors
- Large roof window, opening port for light and ventilation
- Indirect LED lighting
- Shower, shower drain with automatic switch, water inlet valve and connector underneath the sink
- Shower separated with a plexiglas door
- **Large bowl Quiet Flush electric head (toilet)**

## ELECTRICAL INSTALLATION

---

- LED lighting throughout
- LED Navigation lights
- Main 12 V electrical panel at the chart table
- 12 V Circuit for house and engine system

- **Upgraded Gel batteries instead of standard lead**
- **2 x 85 amp Gel house batteries**
- **Additional 2 x 85 amp gel batteries**
- Engine start battery capacity 1 x 110 Ah / 12 V
- 12 V engine alternator: 125 A
- Positive and negative battery switch 12 V in the aft cabin
- **Shore power wired direct**
- **USB plugs in the cabins and the saloon**
- **Navicolor supervision system**
- **Battery monitoring system**
- **Battery charger 60amp**
- **Plugs in the cabins**
- **Interior indirect lighting**
- **Raymarine i70s multifunction display**
- **Depth-speed sensor**
- **Masthead wind sensor**
- **VHF**
- **Raymarine p70s autopilot + ACU400 core unit and gyrocompass**
- **GPS -- Raymarine Axiom 9 multifunction touchscreen display with WIFI**
- **Fusion stereo system with bluetooth and saloon and cockpit speakers**
- **Shore power air conditioning**
- **Fans in saloon and all cabins**
- **Sunsail marine smarthub (wifi via cellular network and stored local content)**
- **Solar panel**

## PLUMBING INSTALLATION

---

- Hot and cold pressurized water circuit with semi-rigid plastic pipes
- "Heavy-duty" water pump (19 L / 5 US gal / mn), accumulator tank for consistent water pressure
- Roto moulded tank: 330 L / 87 US gal, under the aft cabin berth
- Tank gauges (1 per tank)
- Tank manifold with selector valves
- 1 x 40L / 10USgal hot water heater connected to engine heat exchanger and 110v or 220v electrical system
- **Transom shower with hot and cold water mixer**
- Electrical shower pumps, self-activating
- Holding tank 130 L / 34 US gal, with gravity drain and deck fitting
- Electric bilge pump located in bilge area with activation via switch at electrical panel
- Dual-action manual bilge pump located in the cockpit, with separate hose from primary bilge pump
- **1 x Additional water tank 200L / 53USgal**

## ENGINE & CONTROLS

---

- **Yanmar 40HP (3JH5A) Shaft drive**
- Engine panel oriented toward helmsman, located on the cockpit table. Throttle at the starboard helm station.
- Insulation: Foam, with fire retardant film
- Built-in muffler, air ventilation and stainless steel exhaust fitting
- Fixed 3-blade propeller
- Ventilation system extractor fan located near the engine, benefiting from the insulation of the engine room. Outlets vents at the back of cockpit
- Roto moulded fuel tank 200 L / 53 US gal located under the aft cabin berth, fuel / water separator
- Access behind steps to engine compartment and from aft cabins

## MAST, RIGGING & SAILS

---

- **Custom heavy duty battened charter mainsail**
- **Charter upgrade, heavy duty furling genoa with Sunsail red UV protection strips**
- **Stackpack LazyJack system in Sunsail blue with logo**
- Classic mast in anodised aluminium with double spreaders, deck-stepped
- Aluminium boom with rigid vang and lowered goose neck for easier handling
- **Adjustable backstay with turnbuckle**
- **ProFurl furling system**
- Running rigging: topping lift, mainsail halyard, genoa halyard, mainsheet, genoa sheets in polyester
- Standing rigging discontinuous 1 x 19 stainless steel wire
- 115 % furling genoa with UV protection
- Mainsheet attached to bridle forward of companionway, with sheets lead back to the cockpit winches
- Adjustable genoa sheet friction rings in cockpit
- Spinlock jammers
- Winch handle
- **1 x Harken 40.2 electric winch on coachroof port**

- 1 x Harken 40.2 winch on coachroof starboard
- 2 x Harken 46.2 ST genoa winches for easy use at the helm stations

## GENERAL EQUIPMENT

---

- **All systems labeled in English/French inc. valves/holding tanks**

## SAFETY GEAR

---

- **Primary and secondary anchors**
- **6 x Fenders**
- **6 x Mooring / dock lines**
- **Life jackets and safety harnesses per max pax**
- **Flare kit**
- **Binoculars**
- **Navigation tools: Parallel rule, compass, dividers**

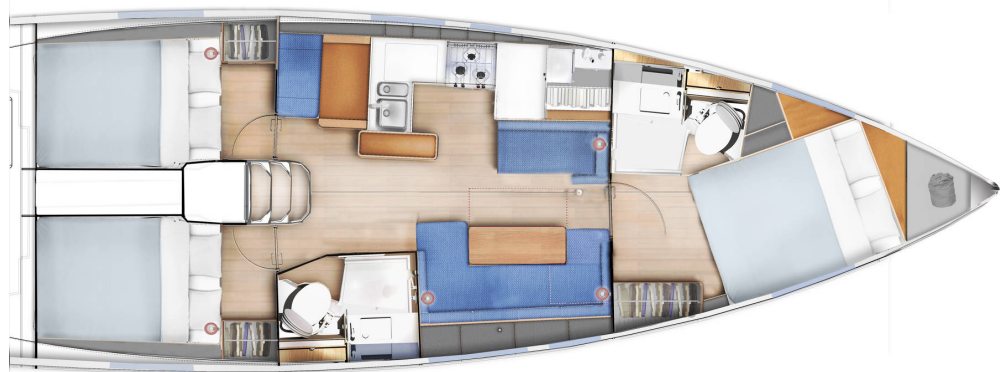
## CRUISING GEAR

---

- **Plates, cups, saucers, glasses per max pax**
- **Bed linens per max pax**
- **Flatware per max pax**
- **Pots, pans, miscellaneous food prep tools**
- **Cooking and serving utensils**
- **Towels and washcloths**

### Specifications

Length Overall:	12.35m/40ft 5in
Waterline Length:	11.71m/38ft 4in
Beam:	3.99m/13ft 1in
Draft:	1.60m/5ft 2in
Displacement:	7900kg/17417lb
Fuel Capacity:	200L/53gal
Water Capacity:	530L/140gal



*The Builder reserves the right to change or amend the contents of this document at any time without prior notification to any third party, and no liability will be accepted for errors contained within the same.*